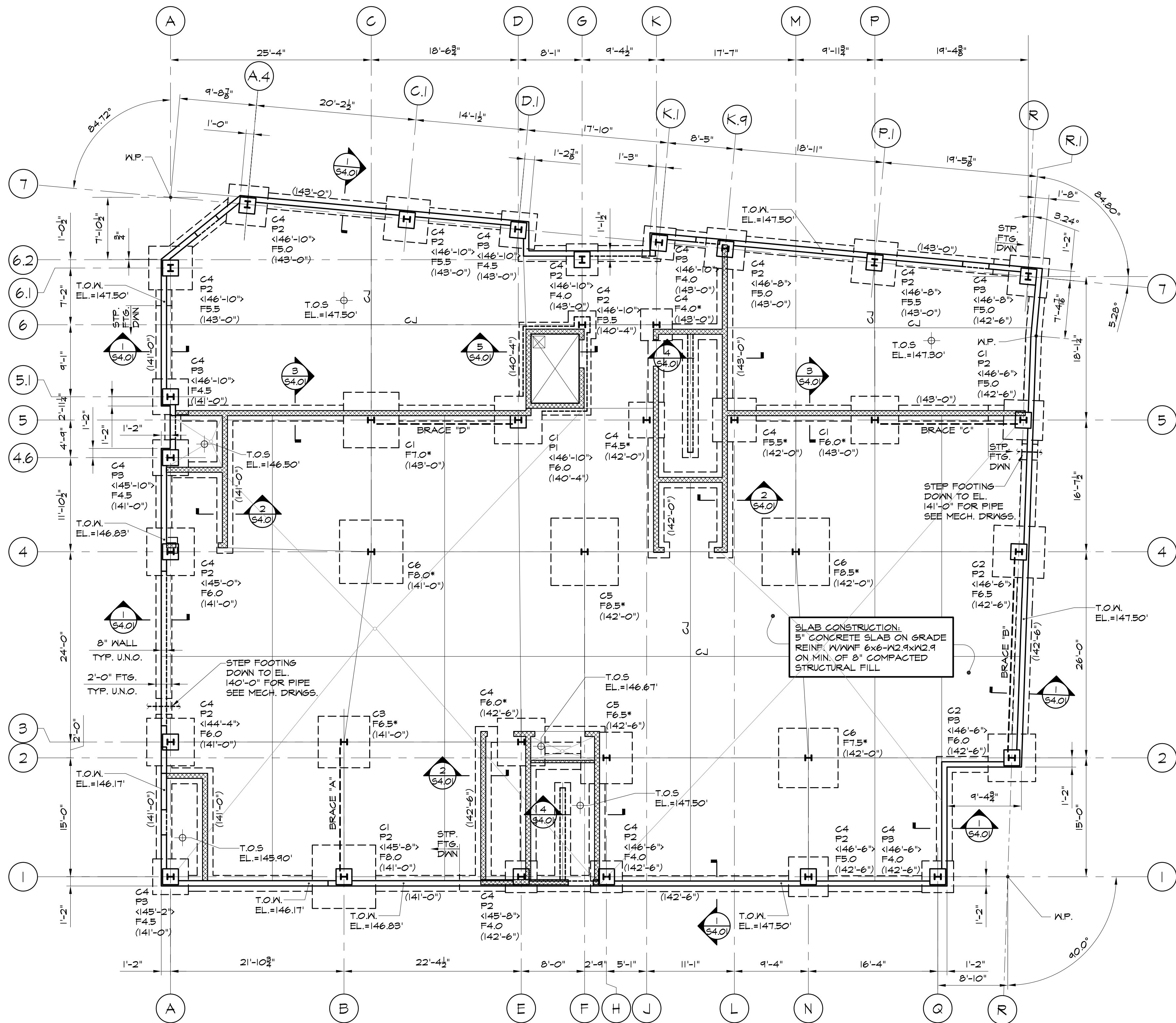




Reviewed for Code Compliance  
Inspection Division  
Approved with Conditions

Date: 05/16/14



FOUNDATION PLAN  
1/8"=1'-0"

FOUNDATION NOTES:

1. FOR TYPICAL DETAILS & GENERAL NOTES SEE DRAWINGS S2.01 TO 2.03.
2. SLAB ELEVATION SHALL BE ELEVATION 147'-6" U.N.O.
3. F... INDICATES FOOTING MARK. FOR FOOTING SIZES & REINFORCING SEE FOOTING SCHEDULE ON THIS DRAWING.
4. P... INDICATES PIER TYPE. FOR DETAILS AND SCHEDULE SEE DRAWING S3.01.
5. C... INDICATES COLUMN MARK. FOR SIZES SEE COLUMN SCHEDULE ON DRAWING S2.04.
6. BOTTOM OF EXTERIOR FOOTING SHALL BE -4'-0" BELOW GRADE UNLESS NOTED THUS: (...).
7. TOP OF INTERIOR FOOTING SHALL BE -1'-0" FROM REFERENCE SLAB ELEVATION UNLESS NOTED THUS: (T/F...).
8. TOP OF EXTERIOR WALL (T.O.W.) SHALL BE -8" FROM REFERENCE SLAB ELEVATION UNLESS NOTED THUS: "T.O.W. EL.=..."
9. TOP OF EXTERIOR PIER AND TOP OF EXTERIOR WALL PIERS SHALL BE -8" FROM REFERENCE SLAB ELEVATION UNLESS NOTED THUS: <...>.
10. TOP OF INTERIOR PIERS SHALL BE -1'-0" FROM REFERENCE SLAB ELEVATION UNLESS NOTED THUS: <...>.
11. (----) INDICATES BOTTOM OF FOOTING ELEVATION.
12. <...> INDICATES TOP OF PIER ELEVATION.
13. (T/F...) INDICATES TOP OF FOOTING ELEVATION.
14. ALL EXPOSED CONCRETE TO BE "RUBBED" FINISH.
15. FOR FLOOR DRAIN ELEVATIONS, SLAB DEPRESSIONS AND SLOPING CONCRETE FLOORS SEE ARCHITECTURAL DRAWINGS.
16. FOR DIMENSIONS & SLOPES OF RAMPS & SIDEWALKS SEE ARCHITECTURAL & CIVIL DRAWINGS.
17. FOR ELEVATIONS OF FOUNDATION WALL PENETRATIONS SEE MECHANICAL AND CIVIL DRAWINGS. SEE DRAWING S2.02 FOR TYPICAL FOOTING DETAIL AT PIPE SLEEVES.
18. THE GENERAL CONTRACTOR SHALL COORDINATE DEPTH OF ALL SLAB DEPRESSIONS SHOWN ON PLANS.
19. THE EXTERIOR WALL FOOTINGS HAVE BEEN DROPPED AT LOCATIONS OF SEWERS, DRAINS, GAS LINES AND WATERLINES. THE TOP OF FOOTING IS SET AT 6 INCHES PLUS/MINUS LOWER THAN THE PIPE INVERT ELEVATION. THE GENERAL CONTRACTOR SHALL NOTIFY THE ENGINEER IF STEPPED FOOTINGS ARE NOT LOCATED AT EXTERIOR WALL PIPE PENETRATIONS.
20. FOR LOCATION AND EXTENT OF FOUNDATION INSULATION SEE ARCHITECTURAL DRAWINGS.
21. FOR SLOPED SLAB, SPOT ELEVATIONS, AND ADA RAMP REQUIREMENTS SEE ARCHITECTURAL & CIVIL DRAWINGS.

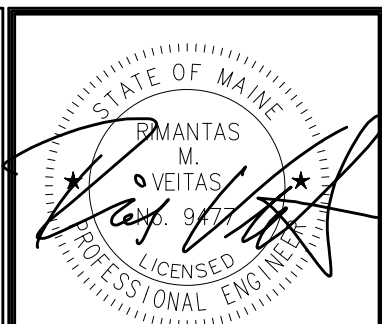
FOOTING SCHEDULE-1.5 TSF

MARK	FOOTING SIZE	REINFORCING
F3.0	3'-0"x3'-0"x1'-0"	4-#4 EMB
F3.5	3'-6"x3'-6"x1'-0"	4-#4 EMB
F4.0	4'-0"x4'-0"x1'-0"	5-#4 EMB
F4.5	4'-6"x4'-6"x1'-0"	6-#4 EMB
F5.0	5'-0"x5'-0"x1'-0"	7-#4 EMB
F5.5	5'-6"x5'-6"x1'-1"	6-#5 EMB
F6.0	6'-0"x6'-0"x1'-2"	7-#5 EMB
F6.5	6'-6"x6'-6"x1'-4"	6-#6 EMB
F7.0	7'-0"x7'-0"x1'-5"	6-#6 EMB
F7.5	7'-6"x7'-6"x1'-6"	7-#6 EMB
F8.0	8'-0"x8'-0"x1'-7"	6-#7 EMB
F8.5	8'-6"x8'-6"x1'-8"	7-#7 EMB
F9.0	9'-0"x9'-0"x1'-9"	10-#6 EMB

FX\* INDICATES FTG W/ PLAN DIMENSIONS & REBARS OF FX AND 2'-0" THICKNESS.

MASONRY WALL REINFORCING

8" CMU WALLS SHALL BE REINFORCED WITH #5@24" O.C.  
PROVIDE #5 FOUNDATION DONNELS 5'-0" LONG,  
PROJECT 2'-6" ABOVE FOUNDATION.  
SPACING TO MATCH CMU REINFORCING.  
GROUT SOLID AT REINFORCING FOR FULL HEIGHT OF WALL



Prepared For:  
**118 on Munjoy Hill, LLC**  
118 CONGRESS STREET  
PORTLAND, ME 04101

Consultant:  
**VEITAS VEITAS** engineers  
689 Grand Street, Suite 301  
Beverly, Massachusetts 02414  
TEL: (781) 845-2883 FAX: (781) 845-2805

Architect:  
**ARCHETYPE** architects  
48 Union Wharf Portland, Maine 04101  
(207) 772-6022 Fax (207) 772-4056

Project:  
**118 ON MUNJOY HILL**  
118 CONGRESS STREET  
PORTLAND, MAINE

Revisions:  
**100% CONSTRUCTION DOCUMENTS**

Date: 5 MAR 2014  
Scale: As indicated  
**FOUNDATION/  
FIRST FLOOR**

**S1.01**